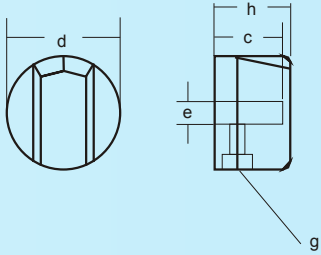


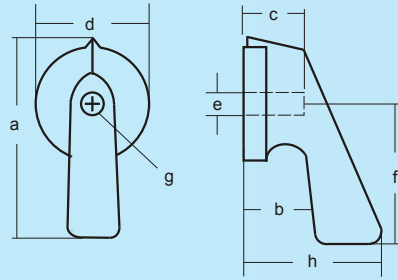
Dimensions for Handles

Beam Handle (B)



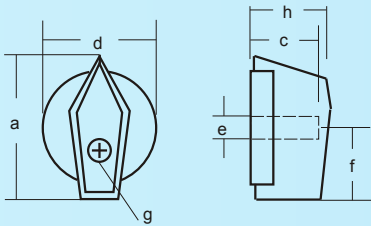
	D00	D0	D1	D2	D3
a					
b					
c		18			
d		28			
e		6			
f					
g		M3			
h		19			
y		6			

Pistol Grip Handle (H)



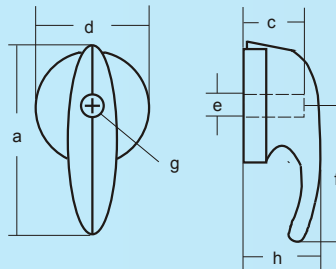
	D00	D0	D1	D2	D3
a			81	105	
b			32	33	
c			13	21	
d			36	50	
e			6	8	
f			60	77	
g			M3.5	M4	
h			60	65	
y			6	9	

Wing Lever Handle (F)



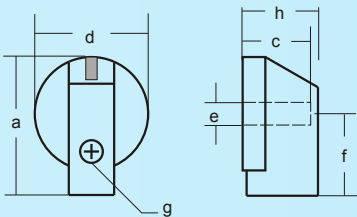
	D00	D0	D1	D2	D3
a	26	42	50	70	104
b					
c	17	18	22	28	39
d	16	28	26	50	77
e	4	6	6	8	10
f	18	26	29	41	61
g		M3	B2.9	B3.5	B4.8
h	15	21	24	32	44
y	3	4	6	9	14

Trunk Handle (R)



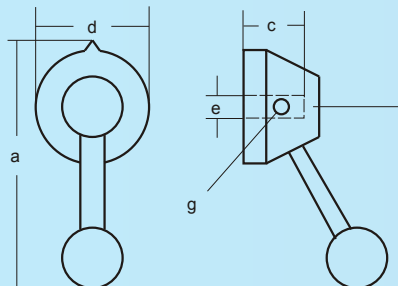
	D00	D0	D1	D2	D3
a				112	141
b				40	54
c				21	26
d				50	77
e				8	10
f				80	98
g				M4	M5
h				50	66
y				9	14

Nose Handle (N)



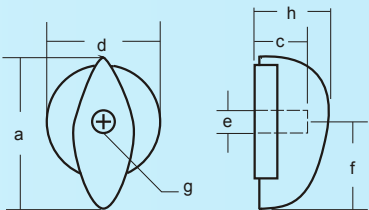
	D00	D0	D1	D2	D3
a	24	30	40		
b					
c	14	20	22		
d	13	28	36		
e	4	6	6		
f	15	22	24		
g		B2.9	B2.9		
h	17	22	24		
y	3	4	8		

Metal Ball Handle (M)



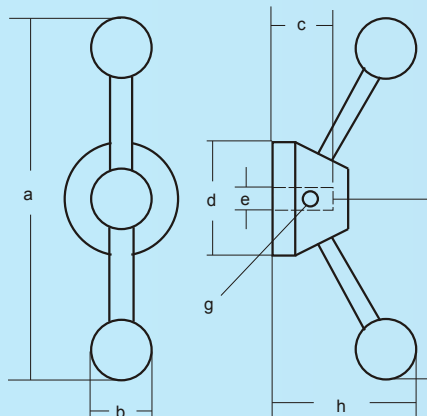
	D00	D0	D1	D2	D3
a			82	122	122
b			25	40	40
c			13	28	28
d			36	50	77
e			6	8	10
f			62	95	95
g			M3.5	M6	M8
h			43	62	62
y			6	10	10

Tear Drop Handle (K)



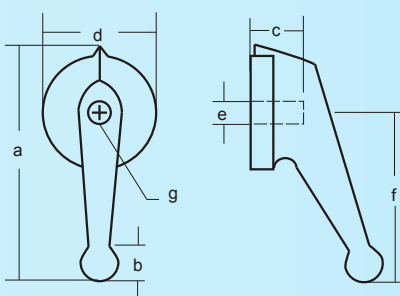
	D00	D0	D1	D2	D3
a		40	51	70	104
b					
c		11	13	21	26
d		28	36	50	77
e		6	6	8	10
f		24	30	41	61
g		M2.6	M3.5	M4	M5
h		21	25	34	45
y		4	6	9	14

Double Lever Handle (D)



	D00	D0	D1	D2	D3
a					252
b					40
c					28
d					77
e					10
f					126
g					M8
h					56
y					10

Insulated Ball Handle (I)



	D00	D0	D1	D2	D3
a			81		
b			20		
c			13		
d			36		
e			6		
f			60		
g			M3.5		
h			52		
y			6		

y = Maximum adjustment on the shaft